

359 FRONT AND SIDE ACCESSORIES

- F.** 1 - Exterior Center Windshield Post Trim (Each)
30130 N30130
-
- 2 - Top Grille Deflectors
 Includes hardware. (Pair)
30120 N30120
-
- 3 - "Bow-Tie" Visor Style Front Grille Logo Trim
 (Each)
30473-02 N30473-02
 "Bow-Tie" Visor Style Logo Trim
 (3-piece kit)
30473-03 N30473-03
-
- 4 - Center Hood Trim, Extended Hood
 Hardware included. (Each)
30116 N30116
 Dimpled Center Hood Trim, Extended Hood.
 Hardware included. (Each)
31116 N31116
 Center Hood Trim, Regular Hood.
 Hardware included. (Each)
30117 N30117
 Dimpled Center Hood Trim, Regular Hood.
 Hardware included. (Each)
31117 N31117

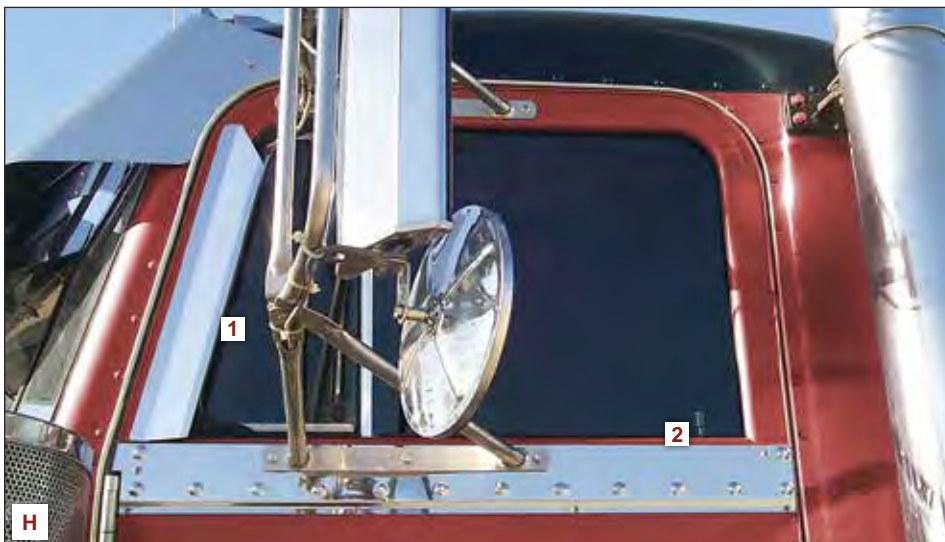
PETERBILT



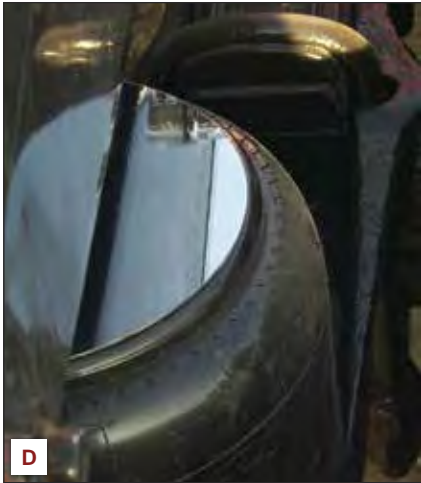
- G.** 1 - Hood Extension Panels (Long Hood)
 Tape mount. (Pair)
33053 N33053
 Extended Hood Extension Panels
 Rivet mount. (Pair)
33055 N33055
-
- 2 - Battery / Tool Box Trim
 Hardware included. (Kit)
30133 N30133
 Battery / Tool Box Trim with Louvers
 Hardware included. (Kit)
30132 N30132
-
- 3 - Under Door Panels with Dimples,
 Tape mount. (Pair)
30129 N30129

WINDOW TRIMS (Pair)

- H.** 1 - Window Air Deflectors
30430 N30430
-
- 2 - Under Window, Behind Mirror Bracket Door Trims
 with Dimples [1973-2005]
30149 N30149



N *The part numbers beginning with 'N' in the right-sided column designate 304 stainless material. 304 stainless has enhanced corrosion resistance.



359 FRONT, SIDE & REAR ACCESSORIES

- Top of Air Bag Trims, Half Moon (Pair)
- D. 30143 N30143**

- 359 Fender Guards
Fits OEM headlights. (Pair)
- E. 30145 N30145**

- Side Grille Deflectors With Square Bottom, 15.8" Tall (Pair)
- 30090 N30090**

- Air Leaf And Oval Logo Trims (Pair)
- F. 30142 N30142**

- Load Light Bracket On Back of Cab Or Sleeper (Pair)
- G. 30137 N30137**

- Inner Fender Trim, Bolt Mount (Pair)
- H. 30122 N30122**

- Inner Fender Trim, Tape Mount (Pair)
- 30069 N30069**

- Behind Hood Intake Replacement Panels (Pair)
- I. 30131 N30131**

PETERBILT

N *The part numbers beginning with 'N' in the right-sided column designate 304 stainless material. 304 stainless has enhanced corrosion resistance.