

UNIVERSAL

LIGHTS

- A. 2" ROUND LIGHTS** (Each)
LED with a single diode. Uses standard double plug harness.

Amber

08005

Red

08006

Amber With Clear Lens

08005C

Red With Clear Lens

08006C

- B. 2" ROUND BEEHIVE LIGHTS** (Each)
LED with 10 diodes. Uses standard double plug harness.

Amber

08003

Red

08004

Amber With Clear Lens

08003C

Red With Clear Lens

08004C

- C. FUSION LED LIGHTS** (Each)
LED with 3 Diodes with .180 male bullet plugs. For use with single wire harnesses. Shown with Chromed Plastic Bezel.

Amber With Clear Lens (Shown)

08260C

Red With Clear Lens

08261C

Fusion Bezel Kit, Adapts light to a 2" hole.

08270

FUSION LED LIGHTS (Each)

LED with 3 Diodes. For use with double wire harnesses.

Green With Clear Lens

08262C

Blue With Clear Lens

08263C

White With Clear Lens

08264C

Fusion Bezel Kit, Adapts light to a 2" hole.

08270





D

D. 1" BULLS-EYE LIGHTS (Each)
LED with single Diode. With .180 Male bullet plugs.
Shown with Chrome Plastic Bezel.

Amber With Amber Lens

08240

Red With Red Lens

08241

Amber With Clear Lens

08240C

Red With Clear Lens

08241C

Green With Clear Lens

08242C

Blue With Clear Lens

08243C

White With Clear Lens

08244C



E

E. 3/4" BUTTON LIGHTS (Each)
LED with single Diode with .180 Male bullet plugs.
Shown with Stainless Steel Bezel.

Amber With Amber Lens and Bezel

08250AAB

Red With Red Lens and Bezel

08250RRB

Amber With Clear Lens and Bezel

08250ACB

Red With Clear Lens and Bezel

08250RCB

Amber With Amber Lens

08250AA

Red With Red Lens

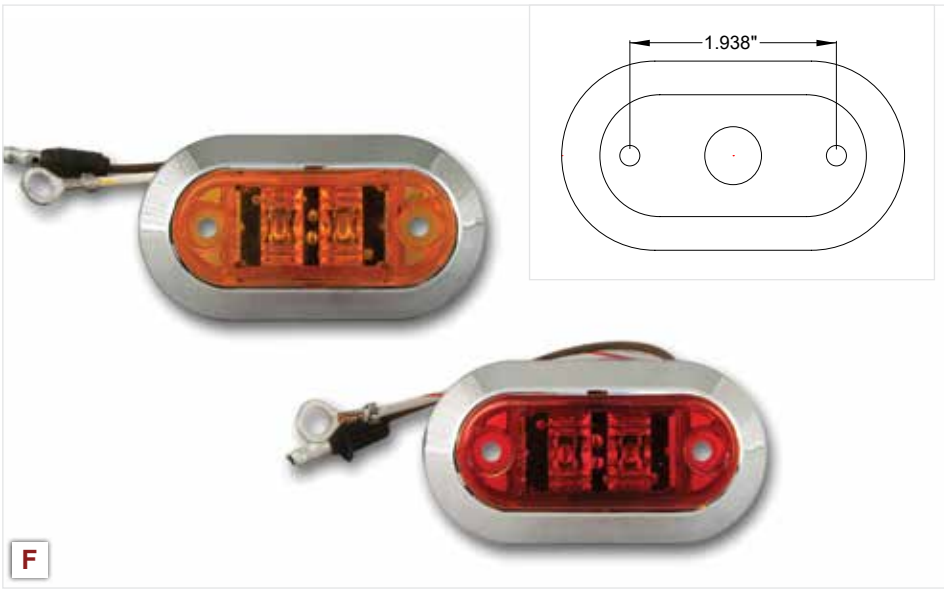
08250RR

Amber With Clear Lens

08250AC

Red With Clear Lens

08250RC



F

F. CHALLENGER LED LIGHTS (Each)
LED with 2 diodes, Bullet plug and ring terminal.
Shown with Chrome Plastic Bezel.

Amber Challenger

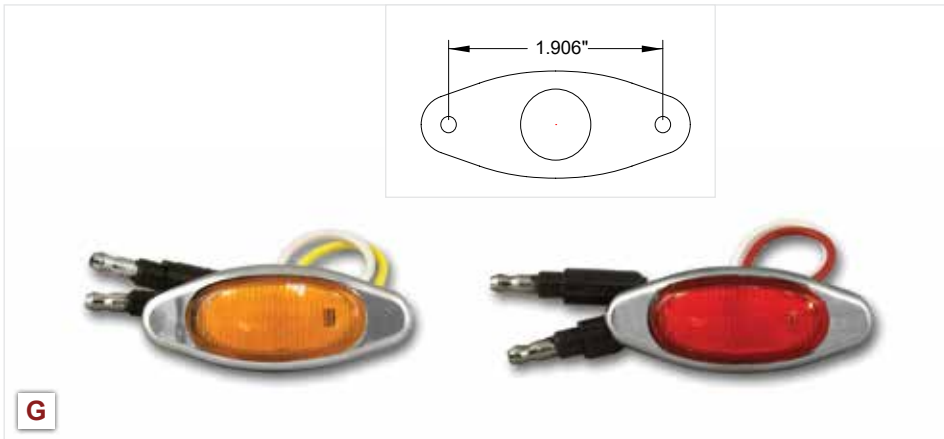
08220

Red Challenger

08221

Bezel

08230



G

G. MINI LIGHTS (Each)
LED with two Diodes with .180 Male bullet plugs.
Shown with Chrome Plastic Bezel.

Amber With Amber Lens and Bezel

MINIKITAA180

Red With Red Lens and Bezel

MINIKITRR180

Amber With Clear Lens and Bezel

MINIKITAC180

Red With Clear Lens and Bezel

MINIKITRC180

N *The part numbers beginning with 'N' in the right-sided column designate 304 stainless material. 304 stainless has enhanced corrosion resistance.

UNIVERSAL

LIGHTS

A. 4" ROUND STOP / TURN / TAIL LIGHTS
Grommet Mount, LED with standard 3 prong socket. (Each)

Red - 5 Diode

08007

Red With Clear Lens - 5 Diode

08007C

Amber - 5 Diode

08013

Amber With Clear Lens - 5 Diode

08013C

White With Clear Lens For Back Up - Single Diode

08062

2 Wire Plug For Back Up Light

08096

A



B. 4" ROUND INTEGRATED STOP / TURN / TAIL BACKUP LIGHTS (Each)

Red Lens Integrated Stop Turn Tail Backup Light

08007-1

C. OVAL INTEGRATED STOP / TURN / TAIL BACKUP LIGHTS (Each)

Red Lens Integrated Stop Turn Tail Backup Light

08012-1

D. OVAL STOP / TURN / TAIL LIGHTS

Grommet Mount, LED with 5 Diodes and standard 3 prong socket. (Each)

Red

08012

Red With Clear Lens

08012C

Amber

08023

Amber With Clear Lens

08023C



B

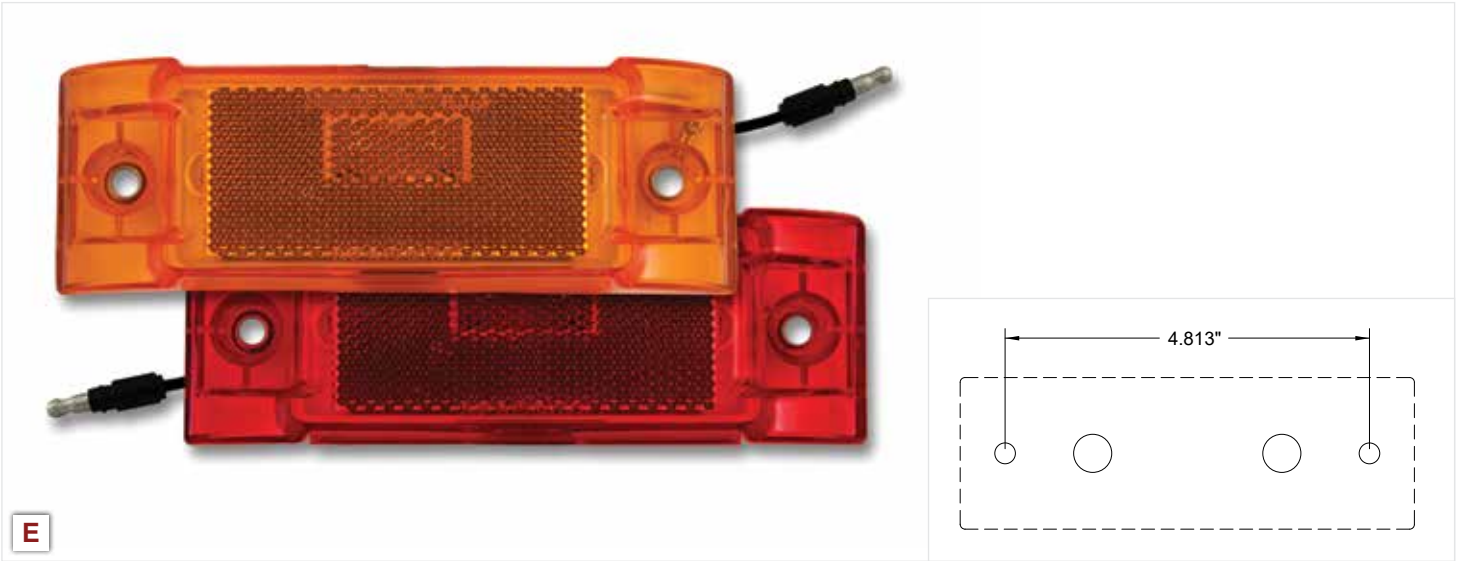
See Page 377 for Grommets.



C



D



E

E. SUPER 21 LIGHTS
LED with 8 Diodes and 08042 plug. (Each)

- Amber
08014

- Red
08001

- Amber With Clear Lens
08014C

- Red With Clear Lens
08001C

F. RECTANGULAR LIGHTS
Grommet Mount, and standard 3 prong socket. (Each)

- 1** - Incandescent Red / Clear (Stop/Turn/Tail/Backup)
08008INC

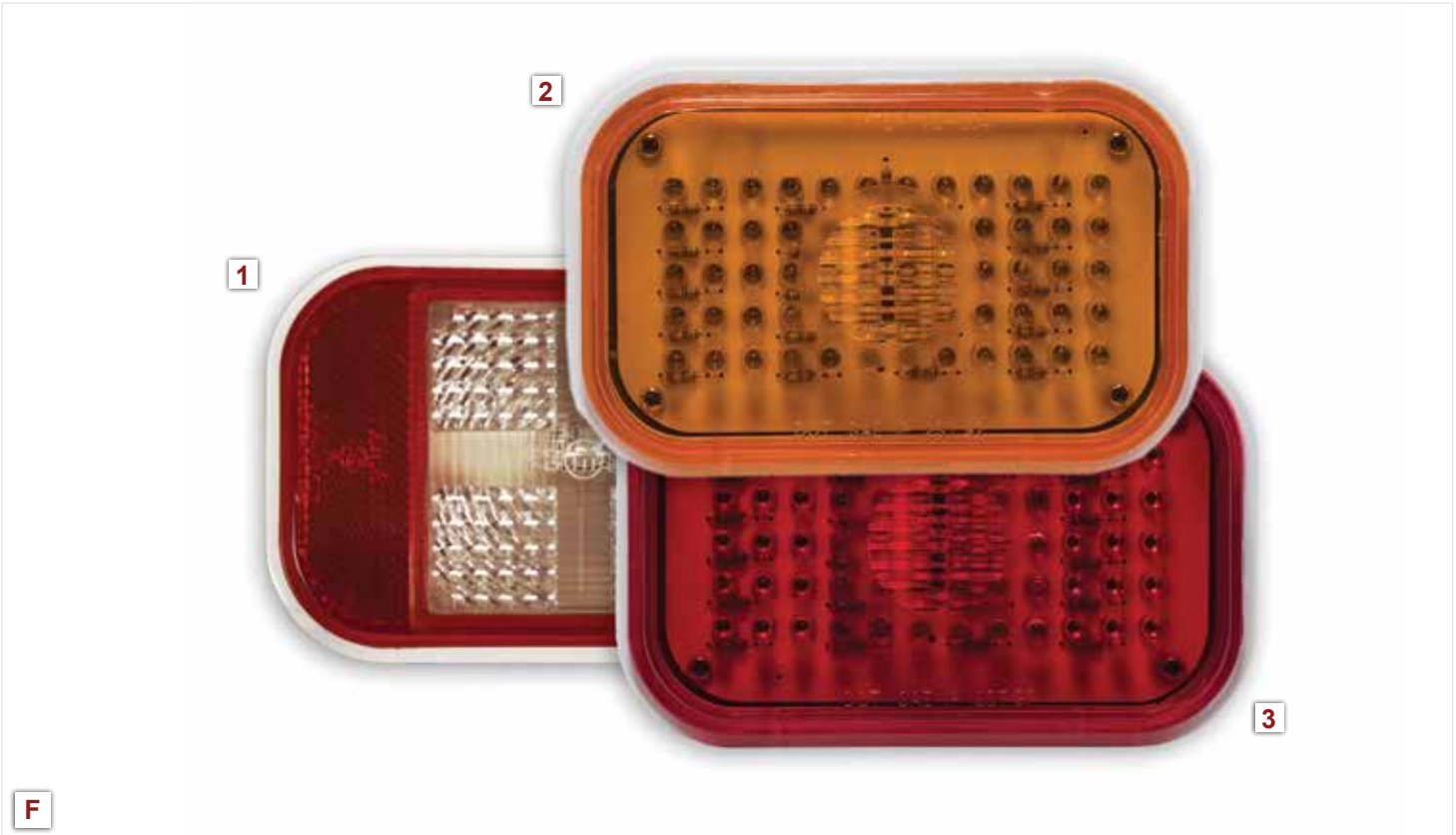
- Incandescent Amber (Turn / Tail)
08010INC

- Incandescent Red (Stop / Turn / Tail)
08033INC

- 2** - 50 LED Amber (Turn / Tail)
08010

- 3** - 50 LED Red (Stop / Turn / Tail)
08033

See Page 377 for Grommets.
See Page 378 for Super 21 Guards.



F

N *The part numbers beginning with 'N' in the right-sided column designate 304 stainless material. 304 stainless has enhanced corrosion resistance.



A

A. MILLENNIUM M1 LIGHTS
 With .180 male bullet plugs and Bezel. (Each)

- LED Amber (4 diode)
M1KITAA180

- LED Red (4 diode)
M1KITRR180

- LED Amber With Clear Lens (4 diode)
M1KITAC180

- LED Red With Clear Lens (4 diode)
M1KITRC180

- Incandescent Amber
M1KITAA180INC

- Incandescent Red
M1KITRR180INC

- Chrome Plastic Replacement Bezel for M1 Light (Each)
M1BEZEL



B

B. MILLENNIUM M3 LIGHTS
 With .180 male bullet plugs, Bezel, and 08400-050 mounting Hardware. (Each)

- LED Amber (2 diode)
M3KITAA180

- LED Red (2 diode)
M3KITRR180

- LED Amber With Clear Lens (2 diode)
M3KITAC180

- LED Red With Clear Lens (2 diode)
M3KITRC180

- Incandescent Amber
M3KITAA180INC

- Incandescent Red
M3KITRR180INC

- Chrome Plastic Replacent Bezel for M3 Light (Each)
M3BEZEL

C. MILLENNIUM M5 LIGHTS
 With .180 male bullet plugs and Bezel. (Each)

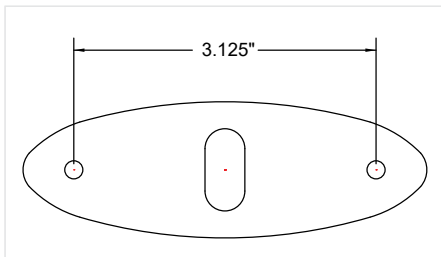
- Amber (3 diode)
M5KITAA180

- Red (3 diode)
M5KITRR180

- Amber With Clear Lens (3 diode)
M5KITAC180

- Red With Clear Lens (3 diode)
M5KITRC180

- Chrome Plastic Replacent Bezel for M5 Light (Each)
M5BEZEL



C

N *The part numbers beginning with 'N' in the right-sided column designate 304 stainless material. 304 stainless has enhanced corrosion resistance.

MILLENNIUM M1 GLO SERIES LIGHTS
With .180 male bullet plugs and Bezel. (Each)



LED Red / Red
M1KITGRR180

See index page 382 for information on ordering NEW Millennium Glo Series lights on any RoadWorks lighted part.



LED Amber / Amber
M1KITGAA180

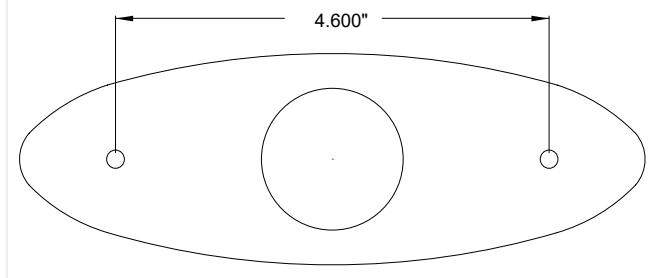


LED Red Outside / Clear Center
M1KITGRC180



LED Amber Outside / Clear Center
M1KITGAC180

Chrome Plastic Replacement Bezel for Millennium M1 Light (Each)
M1BEZEL



MILLENNIUM M3 GLO SERIES LIGHTS

With .180 male bullet plugs, Bezel, and 08400-050 mounting Hardware. (Each)



LED Red / Red
M3KITGRR180



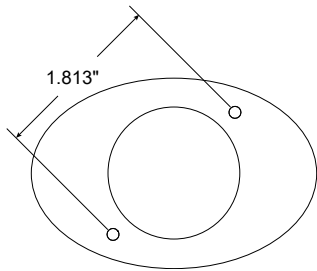
LED Amber / Amber
M3KITGAA180



LED Red Outside / Clear Center
M3KITGRC180

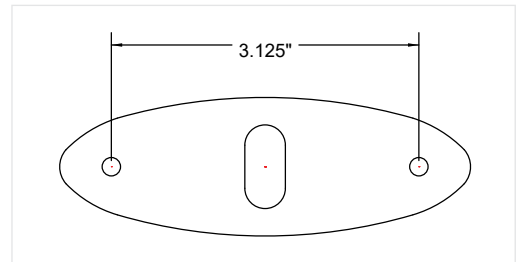


LED Amber Outside / Clear Center
M3KITGAC180



Chrome Plastic Replacnt Bezel for
Millennium M3 Light (Each)
M3BEZEL

Chrome Plastic Replacnt Bezel for
Millennium M5 Light (Each)
M5BEZEL



MILLENNIUM M5 GLO SERIES LIGHTS

With .180 male bullet plugs and Bezel. (Each)



Red / Red
M5KITGRR180



Amber / Amber
M5KITGAA180



Red Outside / Clear Center
M5KITGRC180



Amber Outside / Clear Center
M5KITGAC180

N *The part numbers beginning with 'N' in the right-sided column designate 304 stainless material. 304 stainless has enhanced corrosion resistance.



A

A. SUPERNOVA LIGHTS

Includes Stainless Bezel. (Each)

LED Amber (2 diode)

08002

LED Red (2 diode)

08019

Amber - Single Bulb Incandescent

08002INC

Red - Single Bulb Incandescent

08019INC

Hardware

08160

B. CREW LIGHTS

LED with 3 diodes. Includes bezel for concealing hardware. Uses .180 male bullet plug. (Each)

Amber (3 diode)

08038

Red (3 diode)

08039

Amber With Clear Lens (3 diode)

08038C

Red With Clear Lens (3 diode)

08039C



B



C

C. LICENSE PLATE LED LIGHT
LED with single diode and housing. (Each)

Clear with Clear Lens
08061

D. CONSPICUITY REFLECTORS (Each)

White (8" X 1 1/8")
08055
Red (8" X 1 1/8")
08056



D

GROMMETS FOR LIGHTS (Each)

E. 2" ROUND GROMMETS

Will work for all Flat and Beehive lights.
08025

F. 4" ROUND GROMMETS

Will work for 4" LED and Incandescent lights.
08026

G. OVAL GROMMETS

Will work for Oval LED and Incandescent lights.
08024

H. RECTANGULAR GROMMETS

Will work for Rectangular incandescent lights.
08027



E



F



G



H

N *The part numbers beginning with 'N' in the right-sided column designate 304 stainless material. 304 stainless has enhanced corrosion resistance.